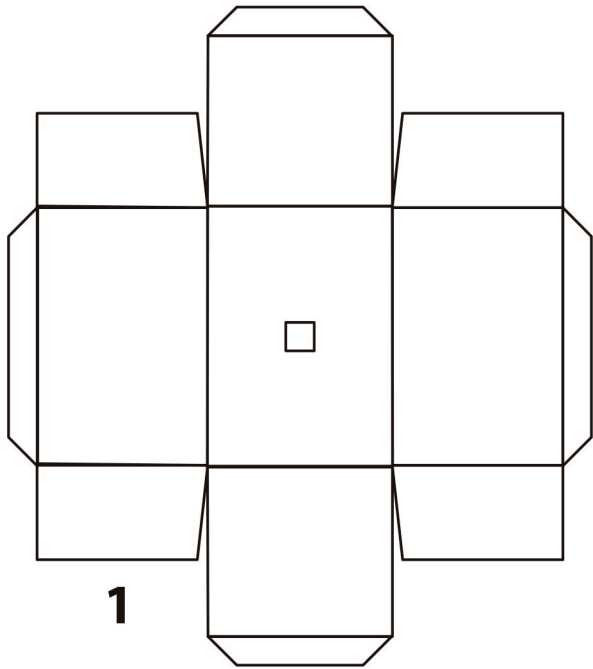
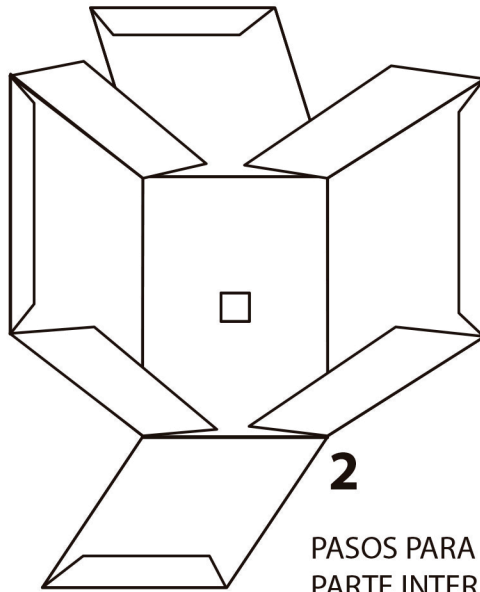


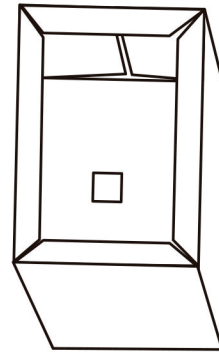
INSTRUCTIVO PARA ARMAR LA CAMARA *Рейка*



1

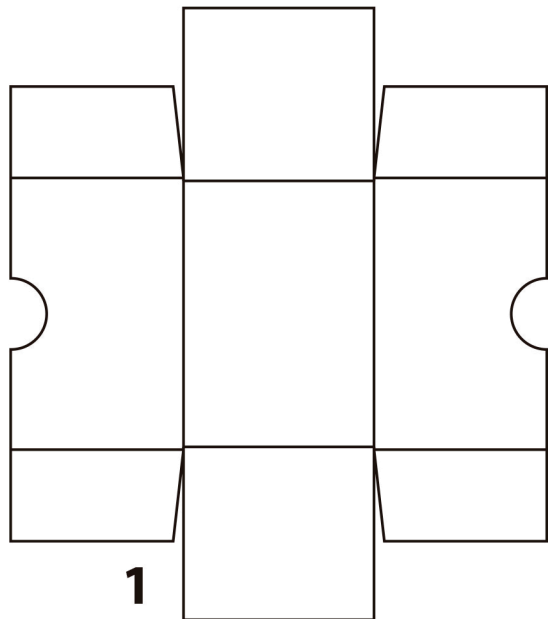


2

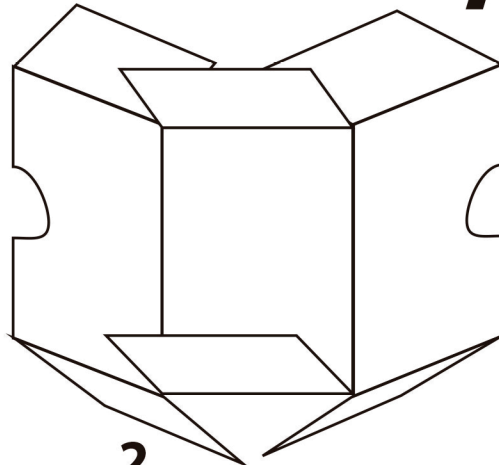


3

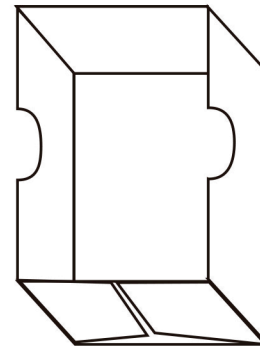
PASOS PARA ARMAR LA PARTE INTERIOR



1



2

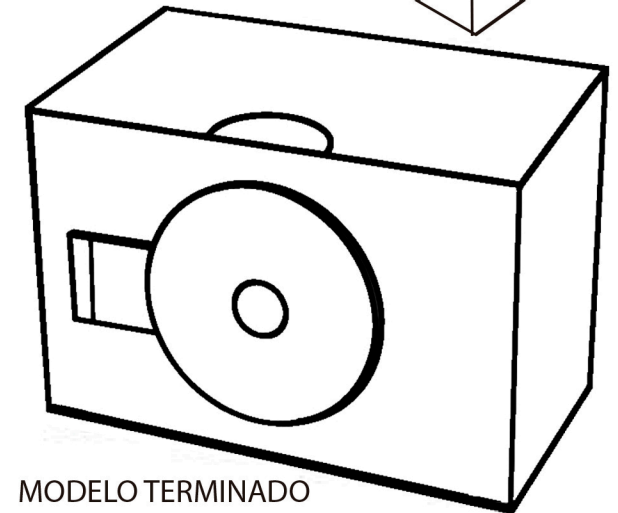
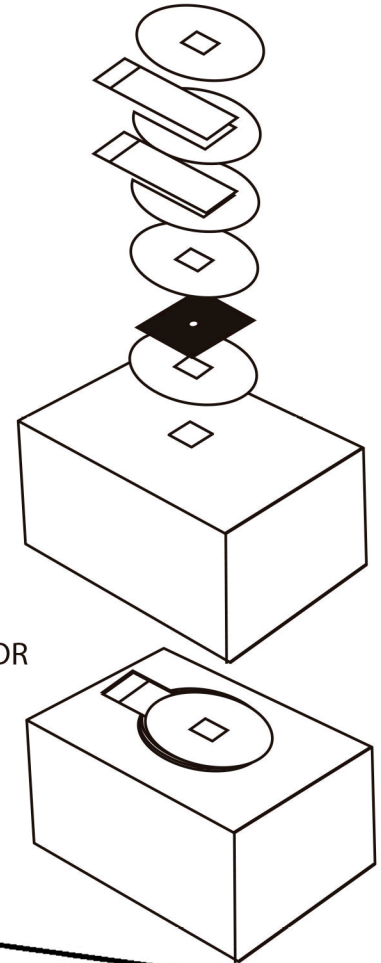


3

PASOS PARA ARMAR LA PARTE EXTERIOR

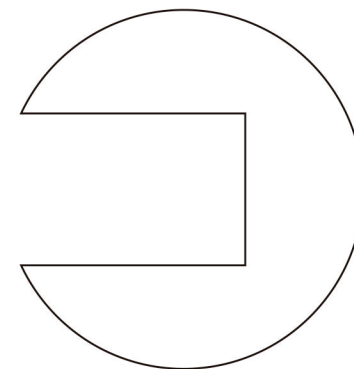
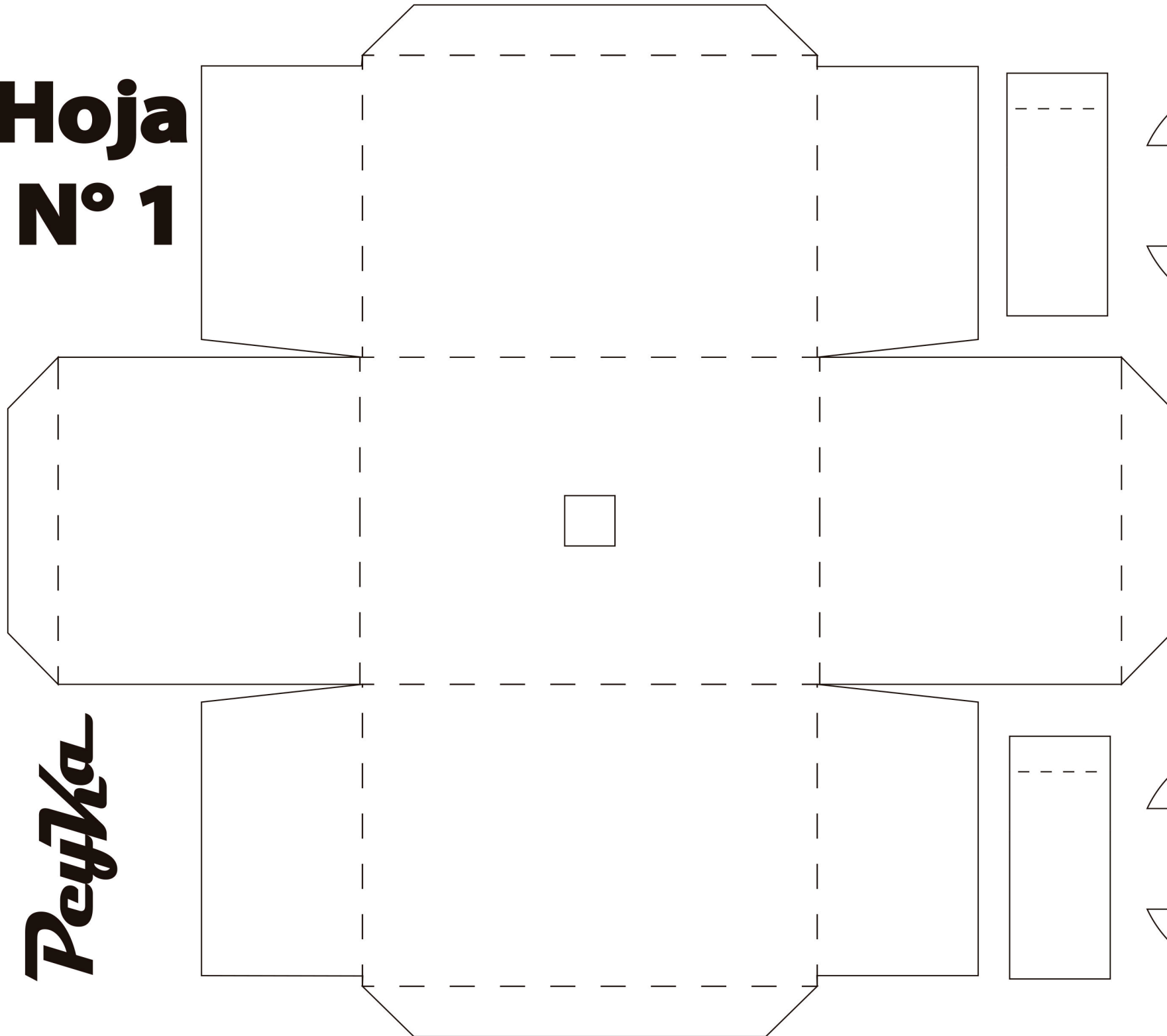
Рейка

PROGRESION DE LAS PARTES DEL OBTURADOR Y MONTAJE DEL MISMO.



MODELO TERMINADO

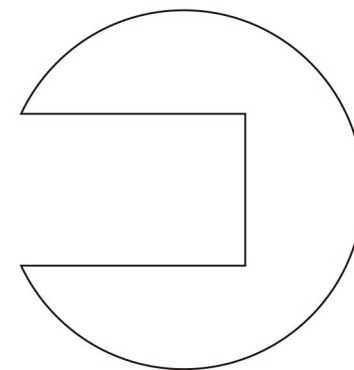
Hoja N° 1



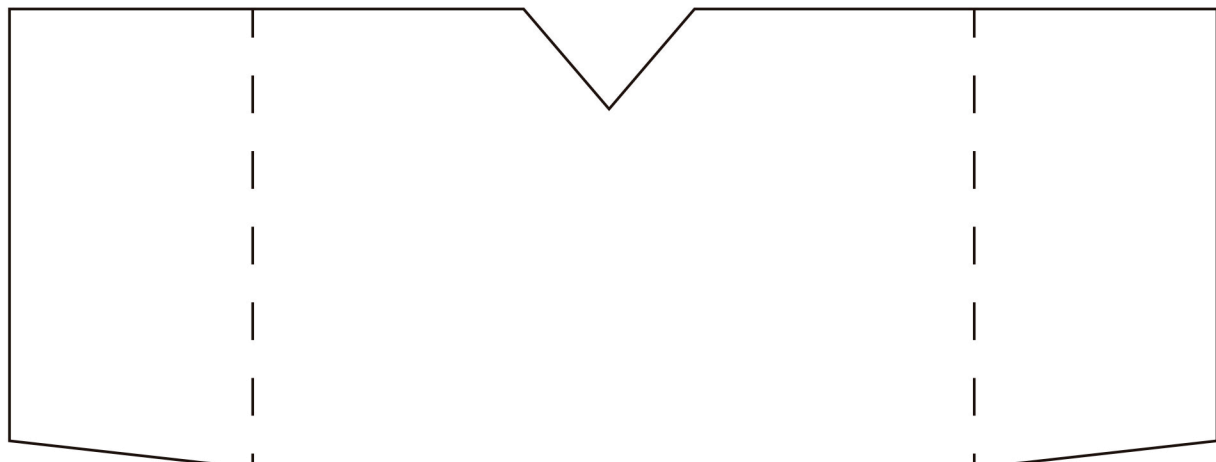
PeyKa

Cámara
Fotográfica
Estenopeica
Para armar

PeyKa



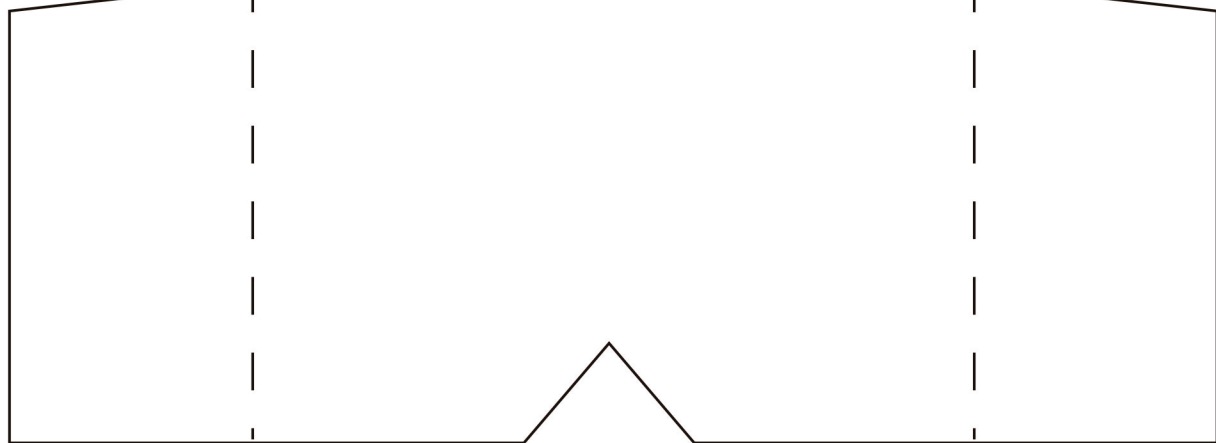
Peçka



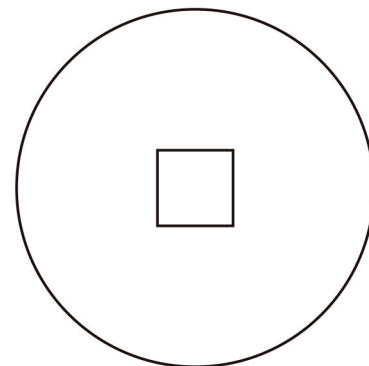
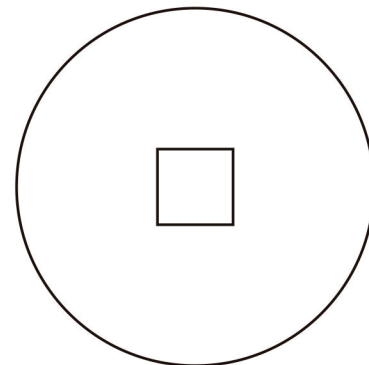
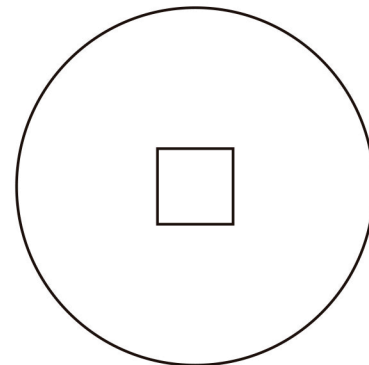
Peçka



Peçka



Peçka
Cámara
Fotográfica
Estenoica
Para armar



Hoja
N° 2